

# Inclusion Provisions & Business Matchmaking

---

MICHELE CARTER



# Statutory Provisions for Inclusion

---

## ■ Federal Law- Title VI of the Civil Rights Act

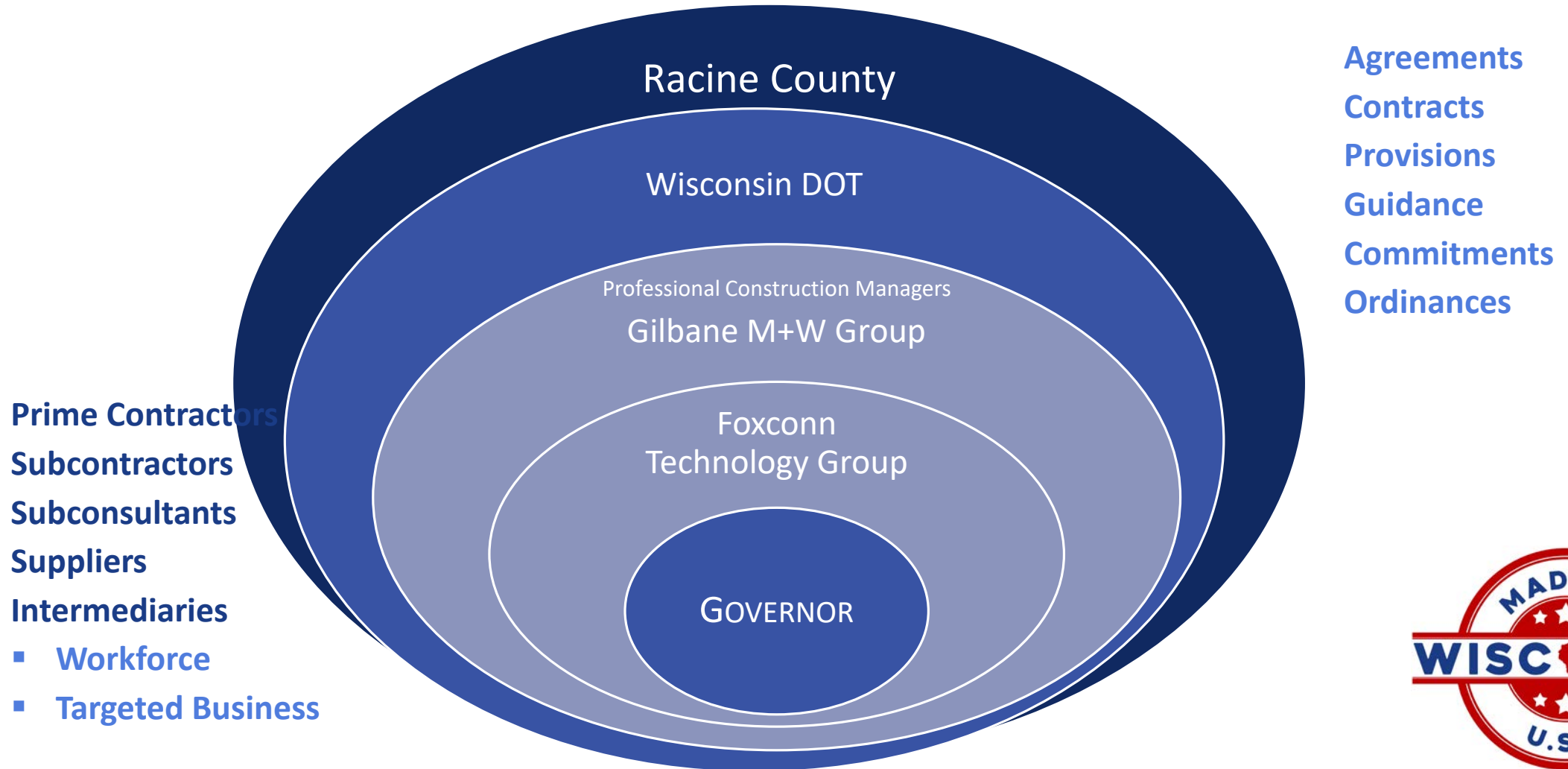
**No person** in the United States **shall**, on the ground of race, color, or national origin, **be excluded** from participation in, be denied the benefits of, or be subjected to discrimination under any program or activity receiving Federal financial assistance.

- State Law- Wisconsin State Statutes
- County and City Ordinances

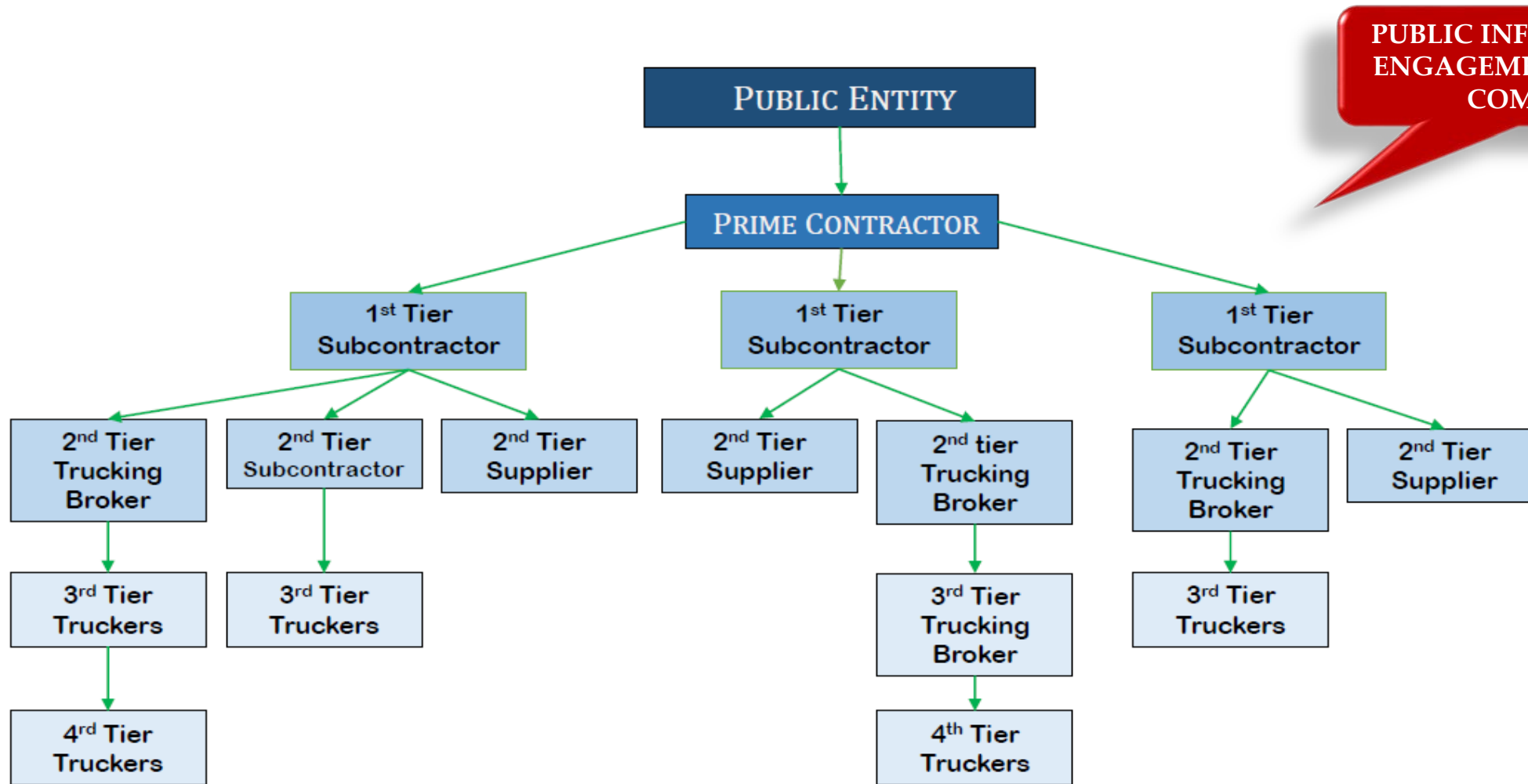
**Assurance of nondiscrimination is an appeal for inclusion**



# What does inclusion look like?



# Wisconn Public Infrastructure Contract Relationships



# Inclusion Contract Provision

## ■ Primes Connect with Targeted Business and Workforce Intermediaries prior to bidding

- Outreach to Intermediaries
- Review Business Opportunity: *subcontracts and support*
- Review Employment Projections & Preferred Skills

## ■ Prime submits Wisconsin Utilization Plan at time of bid

### *Targeted Business Opportunity*

- List subcontractors
- List vendors, suppliers, services supporting contract

### *Employment Opportunity*

- New Hires, Apprentices, Paid Trainee Classifications

## ■ Post contract award: *Affirm Commitments*

- Civil Rights Compliance System Software Data Entry



# Contract Provisions for Inclusion Wisconn Valley

---

## ■ Three documents must be completed by all bidders:

1. Wisconn Valley Utilization Form
2. Wisconn Valley Inclusion Agreement Form
3. Apprentices/Trainee Enrollment Form
  - Documents can be found: <https://wisconnvalley.wi.gov/Pages/workforce.aspx>

## ■ INCLUSION

Mutually beneficial commitment to partner and invest in Wisconsin

## ■ UTILIZATION

Subcontract: contractor, consultant, supplier

Employment: new hires, apprentices, trainees



# SUBCONTRACT OPPORTUNITIES

## Matchmaking Examples

### Building Demolition

#### Trucking

- *Carting away of rubbles, bringing in granular materials.*

#### Landscaping

- *Restoration*
- *Erosion Control*

#### Traffic Control

### Water & Waste Water Utilities

#### Material Supply

- *Various diameters of water mains, Hydrants.*

#### Pipe laying

- *Several linear feet*

#### Landscaping

- *Restoration*
- *Erosion Control*
- *Trucking – Asphaltic materials*

### Road Construction

#### Sewer Work

#### Flat Concrete Work

- *Curb and Gutter*
- *Sidewalk*

#### Signing

- *Signals and Lighting*

#### Pavement Markings

#### Structures

#### Traffic Control

### Service & Supplies

*not in contract*

*Risk & Safety*

*On-site Security*

*Insurance*

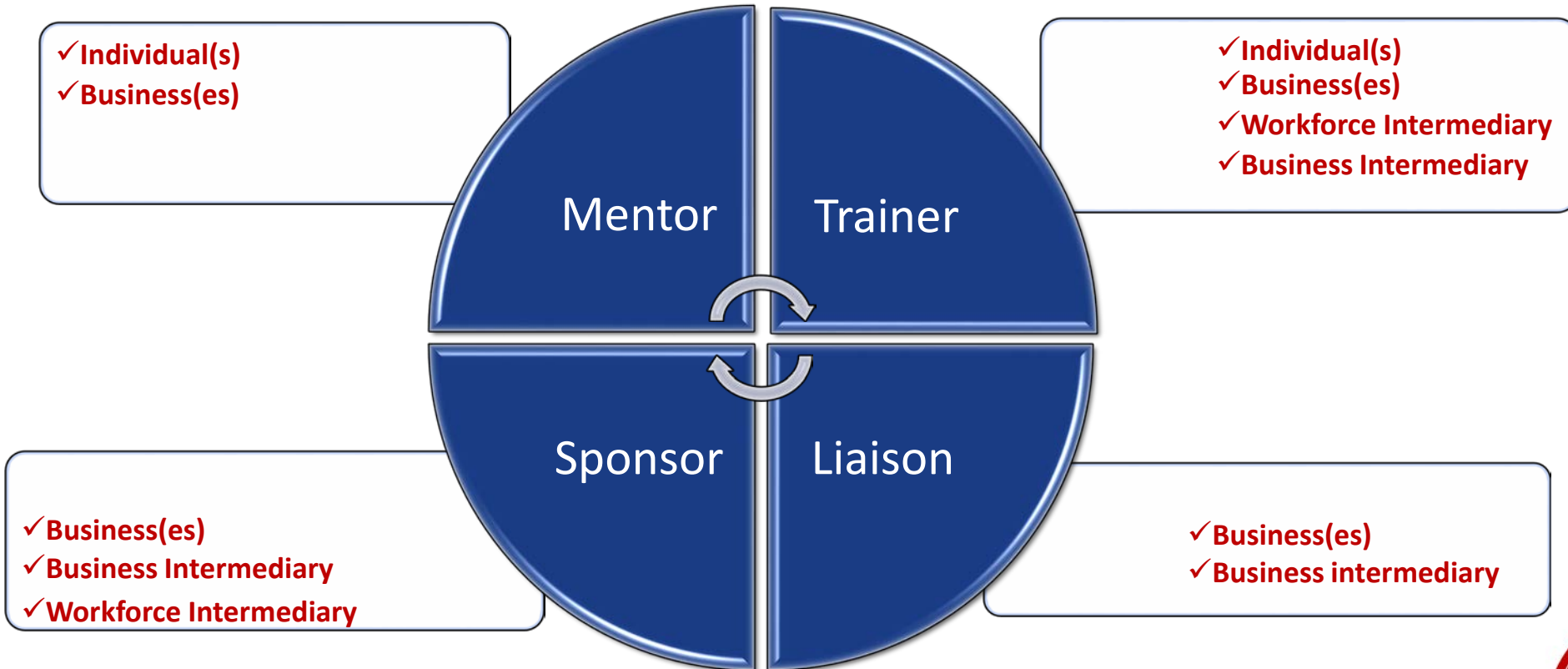
*PPE vendors*

*Fuel Supply*

*Maintenance*



# Inclusionary Efforts & Examples



**EXAMPLES:** *Training coordination (CDL or Welding), Mentor on Government Contracting, Host training with Chamber of Commerce, Sponsor technical training, Introductions to bond agents or bankers familiar with construction, Share dump truck maintenance resources, Finance a training program*





# Intermediaries



# Matchmaking & Networking

---

- Words from Racine City & County Leaders
- Introductory Roll Call
  - Exchange brochures and business cards
  - Discuss the scope of work you're interested in performing
  - Primes share specific subcontract opportunity
  - Small businesses provide overview of business service, products, skills
- Information exchange for utilization & inclusion and
  - *2-3 minutes per firm*



# THANK YOU

---

## *Questions?*

**Michele Carter**  
DBE Program Chief  
WI Department of Transportation  
Office of Business Opportunity & Equity Compliance  
(414) 438-4583  
[Michele.Carter@dot.wi.gov](mailto:Michele.Carter@dot.wi.gov)

**William Martin**  
Director, Strategic Workforce Initiatives  
WI Department of Workforce Development  
Office of the Secretary  
Direct: 608-261-6705  
[William2.Martin@DWD.Wisconsin.gov](mailto:William2.Martin@DWD.Wisconsin.gov)

